

CFM2-1.2

FM BANDPASS FILTER

FEATURES

- FM 1.2 kW bandpass filter
- 2 pole / 150 mm (5.9 in)
- adjustable selectivity



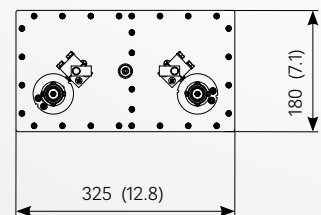
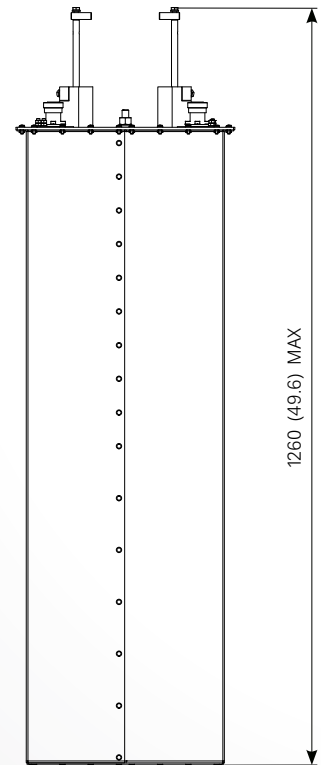
ELECTRICAL DATA

TYPE	CFM2-1.2/BB	CFM2-1.2/CC
FREQUENCY RANGE	87.5 ÷ 108 MHz	
IMPEDANCE	50 ohm	
RETURN LOSS	≥28 dB at carrier fo	
SELECTIVITY stop band atten. 20 dB	± 1.6 ÷ ± 2.0 MHz	
MAX INPUT POWER	1.2 kW (selectivity ± 1.6 ÷ ± 2.0 MHz)	
INSERTION LOSS	See table below	
CONNECTORS	7/16 F	7/8" Unfl.F
OPERATING TEMPERATURE RANGE	-10 to + 45°C (+14 to +113°F)	
OVER TEMPERATURE*	typical 30 K at max input power	
MATERIALS	Brass, aluminium, invar, teflon	
EXTERNAL FINISHING	Painted RAL 9005	
WEIGHT (approx)	11.5 kg (25 lb)	

* referred to ambient temperature. Recommended: [AmbientTemp. + OverTemp.] ≤70°C (158°F)

INSERTION LOSS at carrier fo (dB)

FREQUENCY (MHz)	87.5	98	108	
SELECTIVITY (MHz)	± 2.0	0.34	0.37	0.40
	± 1.6	0.42	0.45	0.48



All dimensions are in millimeters (inches)