

CFM4-0.6

FM BANDPASS FILTER

FEATURES

- FM 0.6 kW bandpass filter
- 4 pole / 150 mm (5.9 in)
- adjustable selectivity



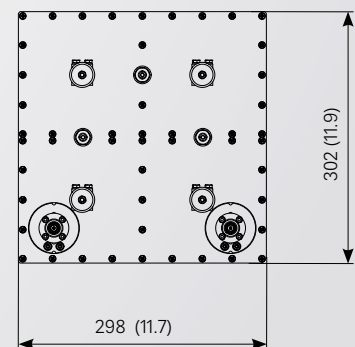
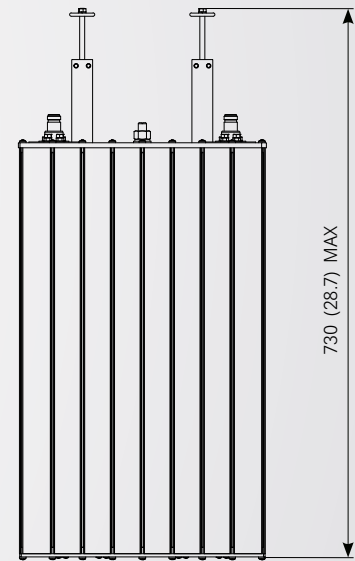
ELECTRICAL DATA

TYPE	CFM4-0.6/BB
FREQUENCY RANGE	87.5 ÷ 108 MHz
IMPEDANCE	50 ohm
RETURN LOSS	≥26 dB at carrier fo
SELECTIVITY stop band atten. 20 dB	± 0.6 ÷ ± 1.2 MHz
MAX INPUT POWER	0.6 kW (selectivity ± 0.6 ÷ ± 1.2 MHz)
INSERTION LOSS	See table below
CONNECTORS	7/16 F
OPERATING TEMPERATURE RANGE	-10 to + 45°C (+14 to +113°F)
OVER TEMPERATURE*	typical 30 K at max input power
MATERIALS	Brass, aluminium, invar, teflon
EXTERNAL FINISHING	Painted RAL 9005
WEIGHT (approx)	24 kg (53 lb)

* referred to ambient temperature. Recommended: [AmbientTemp. + OverTemp.] ≤70°C (158°F)

INSERTION LOSS at carrier fo (dB)

FREQUENCY (MHz)		87.5	98	108
SELECTIVITY (MHz)	± 1.2	0.82	0.85	0.88
	± 1.0	0.90	0.94	0.98
	± 0.8	1.08	1.13	1.18
	± 0.6	1.38	1.44	1.50



All dimensions are in millimeters (inches)