

# COAXIAL ACCESSORIES ZERO CUT

## FEATURES

- flanged / unflanged coaxial accessories
- low insertion losses
- low V.S.W.R
- indoor applications

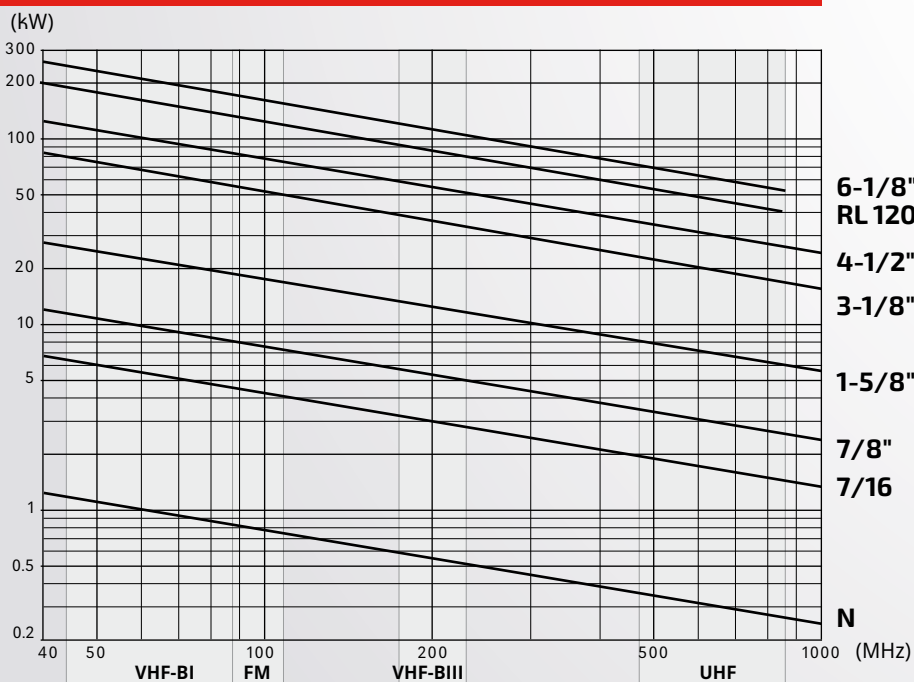


## GENERAL FEATURES

FREQUENCY RANGE	0.1 ÷ 860 MHz	
IMPEDANCE	50 ohm	
RETURN LOSS	≥ 32 dB	
MAX MEAN POWER	See table below	
OPERATING TEMPERATURE RANGE	-40 ÷ +70° C (-40 to +158° F)	
CONNECTORS	See table	
WEIGHT	See table	
MATERIALS	- External body	Aluminium
	- Inner conductor	Silver plated brass
	- Insulator	Teflon
EXTERNAL FINISHING	Sandblasting	



## MAX MEAN POWER



6-1/8"  
RL 120  
4-1/2"  
3-1/8"  
1-5/8"  
7/8"  
7/16"  
N

### STANDARD CONDITIONS:

- V.S.W.R. = 1.0
- Ambient temperature 40°C (104°F)
- Atmospheric Pressure, dry air
- Inner Conductor Temperature 120°C (248°F)

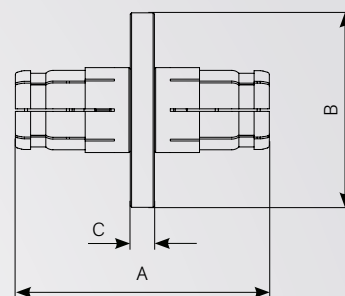
# COAXIAL ACCESSORIES

## ZERO CUT

### BULLETS

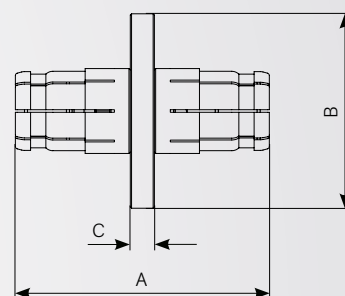
TYPE	CONNECTORS	DIMENSIONS mm (in)			WEIGHT Kg (lb)
		A	B	C	
INN-01	7/8"	59.8 (2.4)	20.65 (0.81)	4.7 (0.185)	0.02 (0.04)
INN-02	1-5/8"	78.4 (3.1)	41.75 (1.64)	6.4 (0.252)	0.07 (0.15)
INN-03	3-1/8"	100 (3.9)	81.2 (3.2)	9.5 (0.374)	0.34 (0.75)
INN-07	4-1/2"	100 (3.9)	105.3 (4.15)	9.8 (0.385)	0.55 (1.2)
INN-05	6-1/8"	125 (4.9)	154 (6.06)	11 (0.433)	1.32 (2.9)

suitable for outdoor connection



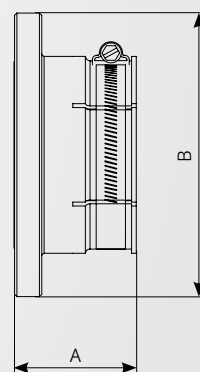
### INNER SUPPORT

TYPE	CONNECTORS	DIMENSIONS mm (in)			WEIGHT Kg (lb)
		A	B	C	
INN-14	7/8"	59.8 (2.4)	19.8 (0.78)	4.7 (0.185)	0.02 (0.04)
INN-06	1-5/8"	78.4 (3.1)	38.5 (1.52)	6.4 (0.252)	0.07 (0.15)
INN-11	3-1/8"	100 (3.9)	76.5 (3.01)	9.5 (0.374)	0.34 (0.75)
INN-10	4-1/2"	100 (3.9)	102.5 (4.04)	9.8 (0.385)	0.55 (1.2)
INN-09	6-1/8"	125 (4.9)	151.3 (5.96)	11 (0.433)	1.32 (2.9)



### CLAMP FLANGE

TYPE	CONNECTORS	DIMENSIONS mm (in)		WEIGHT kg (lb)
		A mm (in)	B mm (in)	
FLN-33/Z	7/8" EIA	29 (1.1)	58 (2.3)	0.08 (0.18)
FLN-01/Z	1-5/8" EIA	41 (1.6)	89 (3.5)	0.17 (0.37)
FLN-02/Z	3-1/8" EIA	53 (2.1)	128 (5.04)	0.38 (0.84)
FLN-27/Z	4-1/2" EIA	52.5 (2.1)	159 (6.3)	0.48 (1.1)
FLN-10/Z	6-1/8" EIA	75.5 (3.0)	206 (8.1)	0.86 (1.9)



### STRAIGHT COUPLINGS

TYPE	CONNECTORS	DIMENSIONS mm (in)		WEIGHT kg (lb)
		A mm (in)	B mm (in)	
FLN-32/Z	7/8" Unfl. M	59.9 (2.4)	27.6 (1.1)	0.06 (0.13)
FLN-03/Z	1-5/8" Unfl. M	78.4 (3.1)	78 (3.1)	0.12 (0.26)
FLN-04/Z	3-1/8" Unfl. M	100 (3.9)	135 (5.3)	0.6 (1.3)
FLN-28/Z	4-1/2" Unfl. M	100 (3.9)	165 (6.5)	1.25 (2.8)
FLN-09/Z	6-1/8" Unfl. M	125 (4.9)	226.5 (8.9)	2.7 (6)

Note: M = male

