

FINE MATCHERS

FEATURES

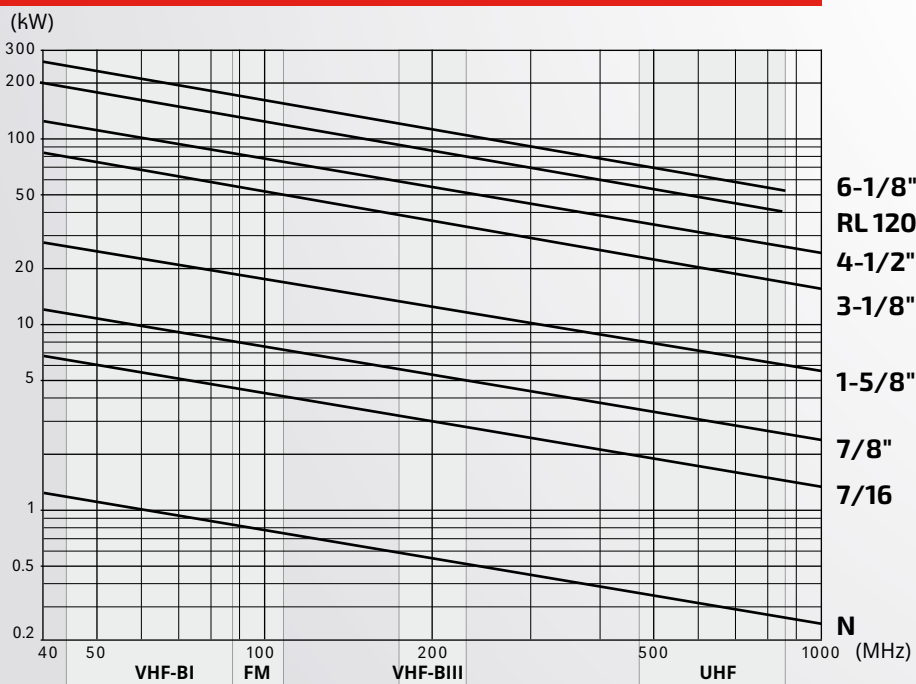
- flanged / unflanged type
- low insertion losses
- low V.S.W.R
- outdoor applications



GENERAL FEATURES

FREQUENCY RANGE	See table	
IMPEDANCE	50 ohm	
RETURN LOSS	≥ 32 dB	
MAX MEAN POWER	See table below	
OPERATING TEMPERATURE RANGE	-40 to +70° C (-40 to +158° F)	
CONNECTORS	See table below	
WEIGHT	See table below	
PRESSURIZATION	Typical operating pressure 300 hPa (300 mBar)	
MATERIALS	- External body	Polished copper, polished brass, aluminium
	- Inner conductor	Silver plated brass
	- Insulating material	Teflon
EXTERNAL FINISHING	Painted RAL 7001, Painted RAL 9005 Passivation SURTEC 650	

MAX MEAN POWER



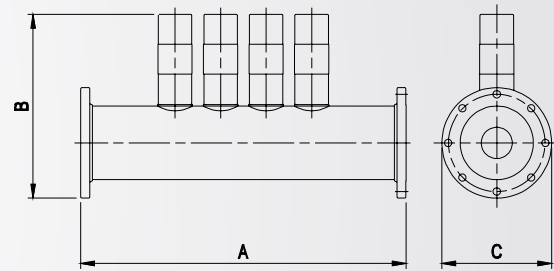
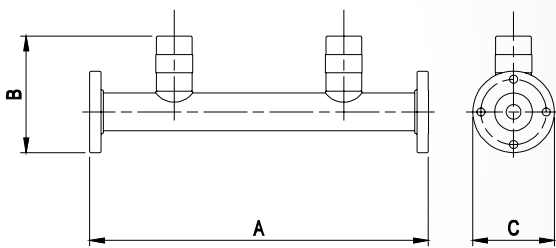
STANDARD CONDITIONS:

- V.S.W.R. = 1.0
- Ambient temperature 40°C (104°F)
- Atmospheric Pressure, dry air
- Inner Conductor Temperature 120°C (248°F)



figure "1"

figure "2"



STANDARD TYPES

TYPE	FREQUENCY RANGE (MHz)	CONNECTORS	FIGURE	DIMENSIONS mm (in)			WEIGHT Kg (lb)	RF OPERATING VOLTAGE (kV)	DC VOLTAGE (kV)
				A	B	C			
FMFM-03	87.5 ÷ 108	1-5/8" EIA	1	764 (30.1)	127.5 (5)	89 (3.5)	4 (8.8)	5.2	7
FMFM-04	87.5 ÷ 108	3-1/8" EIA	1	764 (30.1)	208.7 (8.2)	128 (5)	6.5 (14)	9.7	14
FMFM-06	87.5 ÷ 108	6-1/8" EIA	1	764 (30.1)	363 (14.3)	206 (8.1)	19.2 (42)	17	25
FMFM-07	87.5 ÷ 108	4-1/2" EIA	1	764 (30.1)	264.5 (10.4)	159 (6.3)	10.5 (23)	12.5	19
FMBT-03	174 ÷ 230*	1-5/8" EIA	1	370 (14.6)	127.5 (5)	89 (3.5)	3.2 (7.1)	5.2	7
FMBT-04	174 ÷ 230*	3-1/8" EIA	1	370 (14.6)	208.7 (8.2)	128 (5)	4 (8.8)	9.7	14
FMTV-03	470 ÷ 860	1-5/8" EIA	2	354 (13.9)	121.2 (4.8)	89 (3.5)	2.4 (5.3)	5.2	7
FMTV-04	470 ÷ 860	3-1/8" EIA	2	390 (15.4)	183.5 (7.2)	128 (5)	5 (11)	9.7	14
FMTV-06/SP	470 ÷ 860	6-1/8" EIA	2	520 (20.5)	265 (10.4)	206 (8.1)	16 (35)	17	25
FMTV-07	470 ÷ 860	4-1/2" EIA	2	442 (17.4)	233.5 (9.2)	159 (6.3)	10.5 (23)	12.5	19

*up to 254 MHz on request