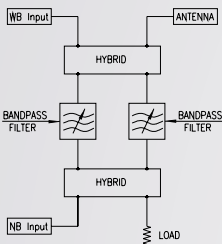


# UC/FM/LB4-1.2

## FM DIRECTIONAL FILTER TYPE COMBINER

### FEATURES

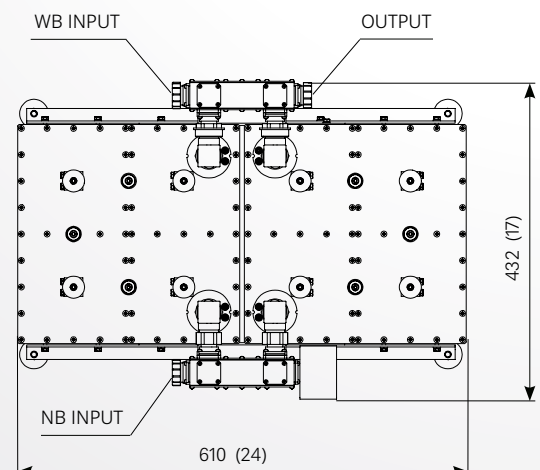
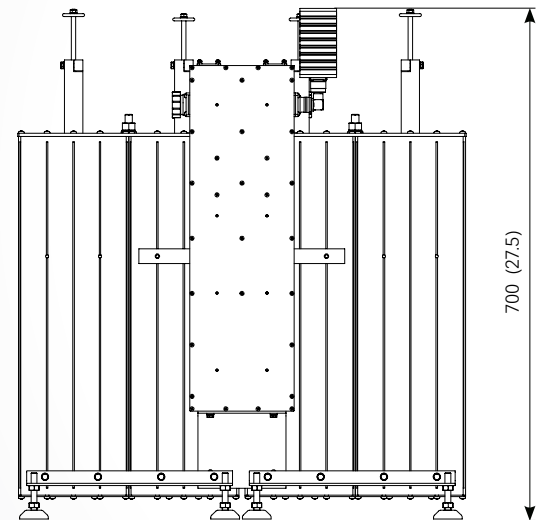
- FM double bridge channel combiner
- 4 pole / 150 mm (5.9 in)
- adjustable selectivity
- temperature compensated



### ELECTRICAL AND MECHANICAL DATA

COMBINER TYPE	UC/FM/LB4-1.2			
FREQUENCY RANGE	87.5 ÷ 108 MHz			
- wideband input	87.5 ÷ 108 MHz			
- narrowband input	Tunable over entire FM range			
INPUTS AND OUTPUT IMPEDANCE	50 ohm			
RETURN LOSS				
- wideband input	≥ 26 dB			
- narrowband input (at carrier fo)	≥ 28 dB			
INSERTION LOSS (at carrier fo)				
NB input with freq. spacing ±1.2 MHz	≤ 0.98 dB			
NB input with freq. spacing ±1.0 MHz	≤ 1.08 dB			
NB input with freq. spacing ±0.8 MHz	≤ 1.28 dB			
NB input with freq. spacing ±0.6 MHz	≤ 1.60 dB			
WB input	≤ 0.10 dB			
WB input with freq. spacing ±0.6 MHz	≤ 0.45 dB			
ISOLATION (at carrier fo)				
- Narrowband input to wideband input	≥ 30 dB			
- Wideband input to narrowband input	≥ 50 dB			
GROUP DELAY	≤ 50 ns at fo ±100 kHz			
(With 0.8 MHz frequency spacing)	≤ 100 ns at fo ±150 kHz			
MAX POWER RATINGS / freq. spacing (MHz)	±1.2	±1.0	±0.8	±0.6
- Narrowband input	1.2 kW	1.2 kW	1.2 kW	1.2 kW
- Wideband input	3 kW	3 kW	3 kW	3 kW
- Total output	3 kW	3 kW	3 kW	3 kW
OPERATING TEMPERATURE RANGE	-10 to +45°C (+14 to +113°F)			
OVER TEMPERATURE*	typical 30 K at max NB input power			
INPUT PORTS				
- Narrowband input	7/16 F			
- Wideband input	7/16 F			
OUTPUT PORT	7/16 F			
WEIGHT (approx)	60 kg (132 lb)			

\* referred to ambient temperature. Recommended: [AmbientTemp. + OverTemp.] ≤ 70°C (158°F)



All dimensions are in millimeters (inches)