

# UNFLANGED COAXIAL ELBOWS ZERO CUT

## FEATURES

- unflanged coaxial elbows
- low insertion losses
- low V.S.W.R
- indoor applications

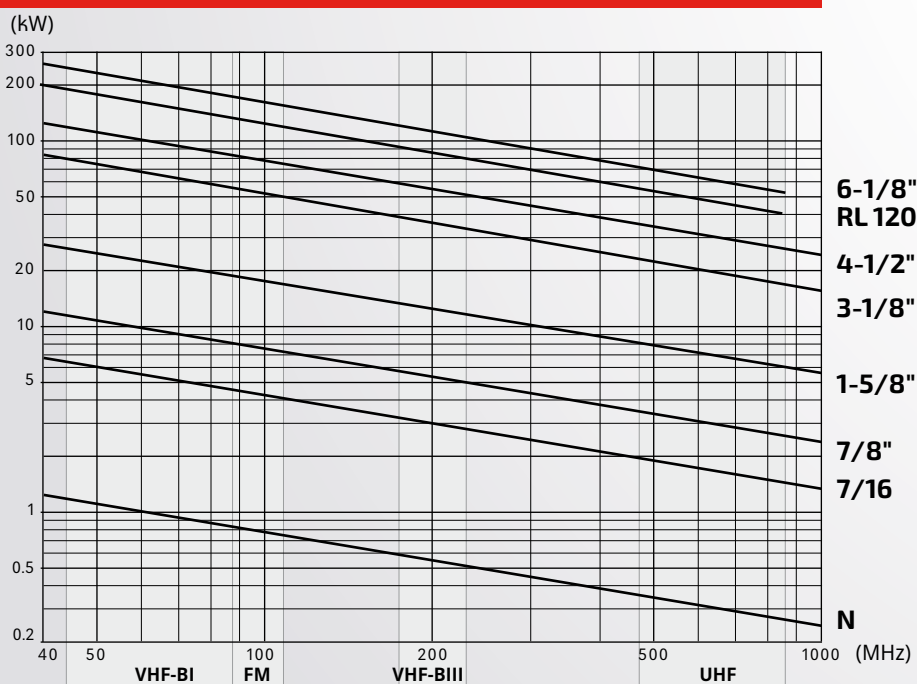


## GENERAL FEATURES

FREQUENCY RANGE	0.1 ÷ 860 MHz *	
IMPEDANCE	50 ohm	
RETURN LOSS	≥ 32 dB	
MAX MEAN POWER	See table below	
OPERATING TEMPERATURE RANGE	-40 ÷ +70° C (-40 to +158° F)	
CONNECTORS	See table below	
WEIGHT	See table below	
MATERIALS	- External body	Aluminium
	- Inner conductor	Silver plated brass, silver plated aluminium
	- Insulator	Teflon
EXTERNAL FINISHING	Sandblasting	

\* up to 790 MHz for 6-1/8"

## MAX MEAN POWER



### STANDARD CONDITIONS:

- V.S.W.R. = 1.0
- Ambient temperature 40°C (104°F)
- Atmospheric Pressure, dry air
- Inner Conductor Temperature 120°C (248°F)

# UNFLANGED COAXIAL ELBOWS ZERO CUT

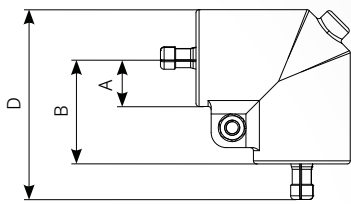


figure "1"

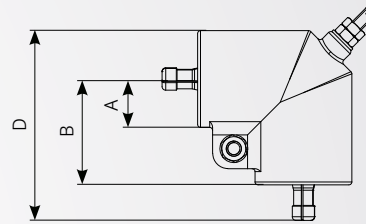
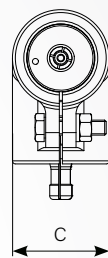


figure "2"

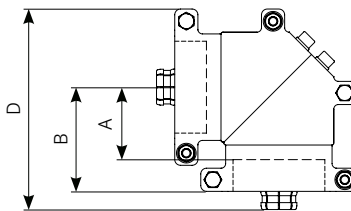
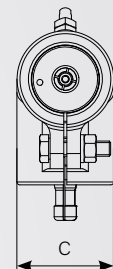


figure "3"

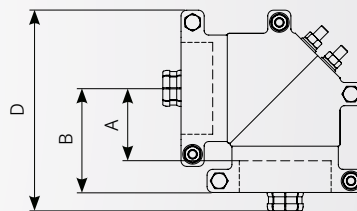
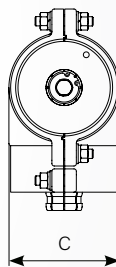
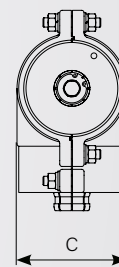


figure "4"



## UNFLANGED COAXIAL ELBOWS ZERO CUT

TYPE	CONNECTORS	FIGURE	DIMENSIONS mm (in)				WEIGHT kg (lb)	RF OPERATING VOLTAGE (kV)	DC VOLTAGE (kV)
			A	B	C	D			
GMT-17/Z	7/8" Unfl. M	1	16 (0.63)	35 (1.38)	32 (1.3)	62.3 (2.5)	0.11 (0.24)	2.7	4
GMT-17/SP/Z	7/8" Unfl. M	2	16 (0.63)	35 (1.38)	32 (1.3)	62.3 (2.5)	0.12 (0.26)	2.7	4
GMT-11/Z	1-5/8" Unfl. M	3	38.5 (1.52)	60 (2.36)	54 (2.1)	111.4 (4.4)	0.5 (1.1)	5.2	7
GMT-11/SP/Z	1-5/8" Unfl. M	4	38.5 (1.52)	60 (2.36)	54 (2.1)	111.4 (4.4)	0.5 (1.1)	5.2	7
GMT-12/Z	3-1/8" Unfl. M	3	62.6 (2.46)	90 (3.54)	95 (3.7)	173.3 (6.8)	1.65 (3.6)	9.7	14
GMT-12/SP/Z	3-1/8" Unfl. M	4	62.6 (2.46)	90 (3.54)	95 (3.7)	173.3 (6.8)	1.65 (3.6)	9.7	14
GMT-16/Z	4-1/2" Unfl. M	3	81.9 (3.22)	109 (4.3)	125 (4.9)	207.4 (8.2)	3.4 (7.5)	12.5	19
GMT-16/SP/Z	4-1/2" Unfl. M	4	81.9 (3.22)	109 (4.3)	125 (4.9)	207.4 (8.2)	3.4 (7.5)	12.5	19
GMT-15/Z*	6-1/8" Unfl. M	3	98 (3.86)	145 (5.7)	172.5 (6.8)	264.3 (10.4)	6.7 (15)	17	25
GMT-15/SP/Z*	6-1/8" Unfl. M	4	98 (3.86)	145 (5.7)	172.5 (6.8)	264.3 (10.4)	6.7 (15)	17	25

Note: F = female / M = male