

UNFLANGED COAXIAL ELBOW

1-5/8" size, ZERO CUT

FEATURES

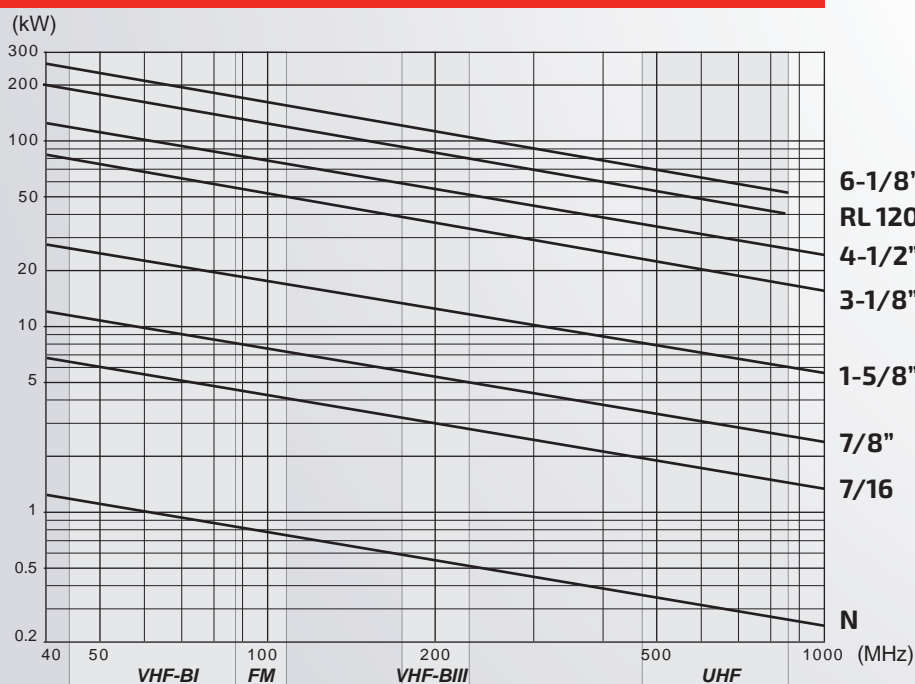
- unflanged coaxial elbow 1-5/8"
- low insertion losses
- low V.S.W.R
- indoor applications

GENERAL FEATURES

FREQUENCY RANGE		FM BAND 87.5 ÷ 108 MHz
IMPEDANCE		50 ohm
RETURN LOSS		≥ 32 dB
MAX MEAN POWER		See table below
OPERATING TEMPERATURE RANGE		-40 ÷ +70° C (-40 to +158° F)
CONNECTORS		1-5/8" Unfl. M
WEIGHT		1.0 Kg
MATERIALS	- External body	Copper / Brass
	- Inner conductor	Silver plated: copper / brass
	- Insulator	High quality virgin Teflon
EXTERNAL FINISHING		None / Painted black (optional)

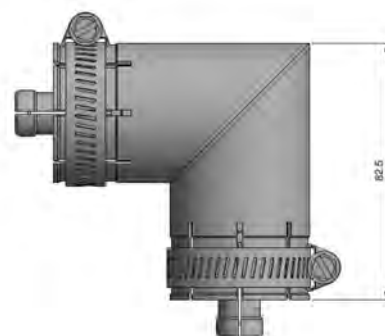
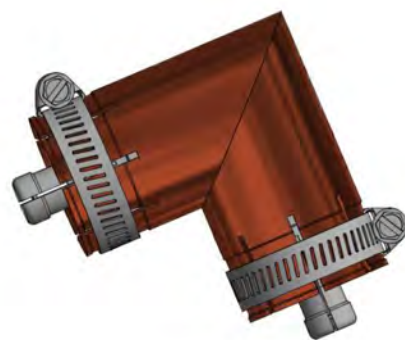
Note: F = female

MAX MEAN POWER



STANDARD CONDITIONS:

- V.S.W.R. = 1.0
- Ambient temperature 40°C (104°F)
- Atmospheric Pressure, Dry Air
- Inner Conductor Temperature 120°C (248°F)



UNFLANGED COAXIAL ELBOW

3-1/8" size, ZERO CUT

FEATURES

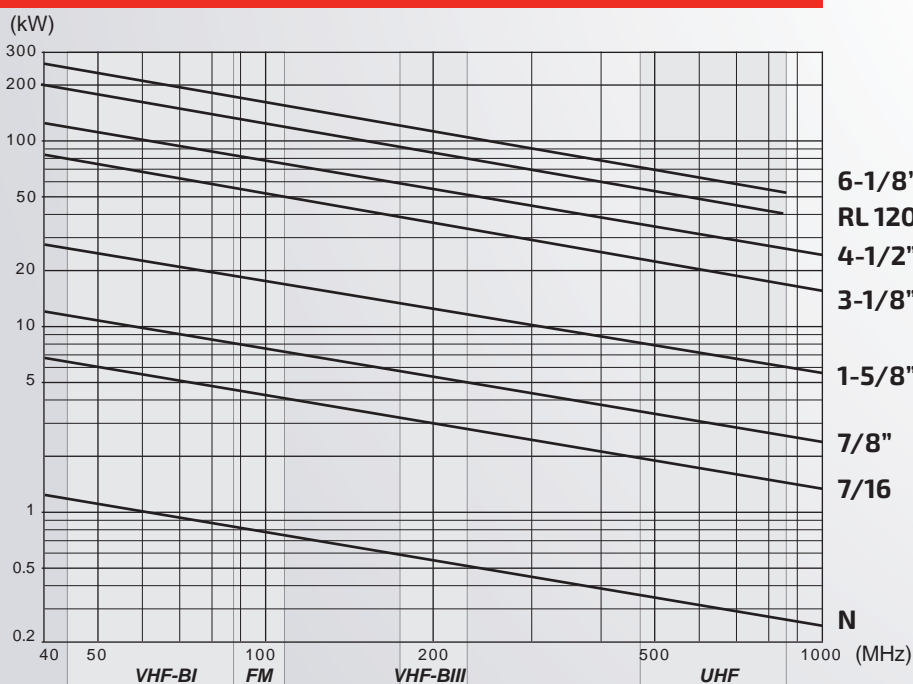
- unflanged coaxial elbow 3-1/8"
- low insertion losses
- low V.S.W.R
- indoor applications

GENERAL FEATURES

FREQUENCY RANGE		FM BAND 87.5 ÷ 108 MHz
IMPEDANCE		50 ohm
RETURN LOSS		≥ 32 dB
MAX MEAN POWER		See table below
OPERATING TEMPERATURE RANGE		-40 ÷ +70° C (-40 to +158° F)
CONNECTORS		3-1/8" Unfl. M
WEIGHT		2.8 Kg
MATERIALS	- External body	Copper / Brass
	- Inner conductor	Silver plated: copper / brass
	- Insulator	High quality virgin Teflon
EXTERNAL FINISHING		None / Painted black (optional)

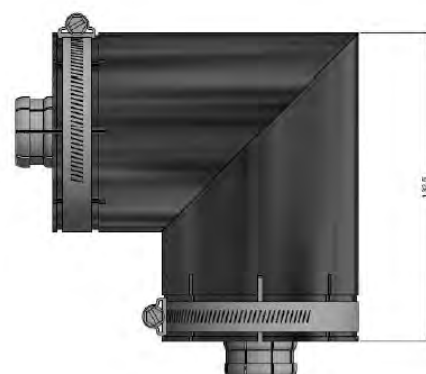
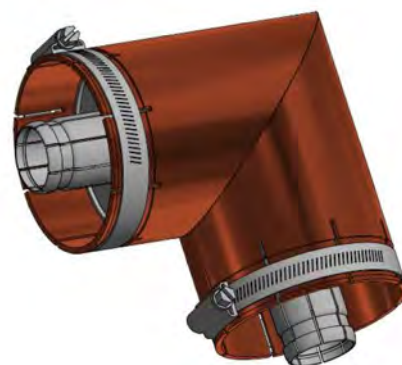
Note: F = female

MAX MEAN POWER



STANDARD CONDITIONS:

- V.S.W.R. = 1.0
- Ambient temperature 40°C (104°F)
- Atmospheric Pressure, Dry Air
- Inner Conductor Temperature 120°C (248°F)



UNFLANGED COAXIAL ELBOW

4-1/2" size, ZERO CUT

FEATURES

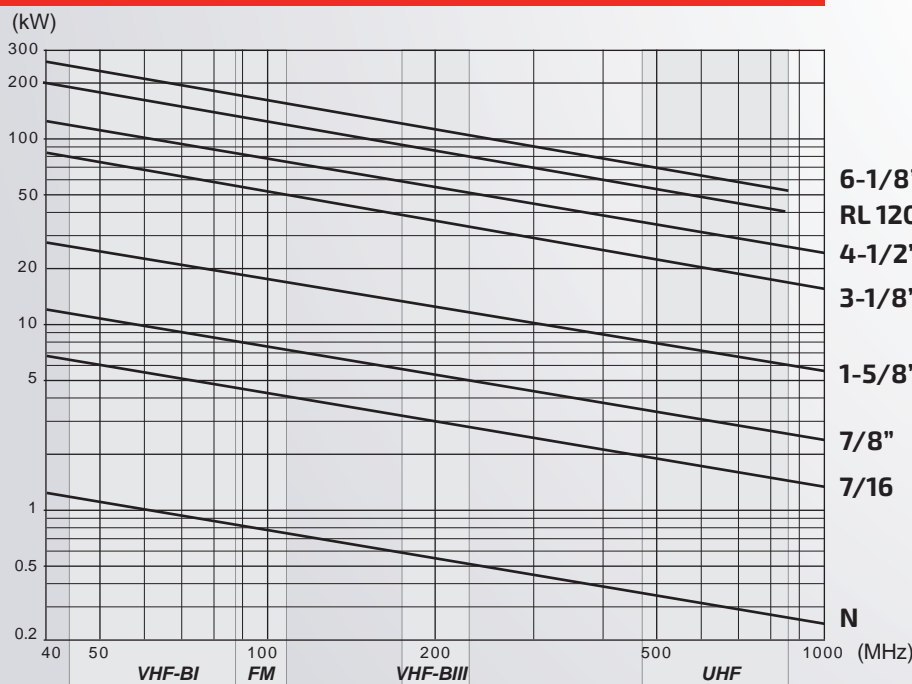
- unflanged coaxial elbow 4-1/2"
- low insertion losses
- low V.S.W.R
- indoor applications

GENERAL FEATURES

FREQUENCY RANGE		FM BAND 87.5 ÷ 108 MHz
IMPEDANCE		50 ohm
RETURN LOSS		≥ 32 dB
MAX MEAN POWER		See table below
OPERATING TEMPERATURE RANGE		-40 ÷ +70° C (-40 to +158° F)
CONNECTORS		4-1/2" Unfl. M
WEIGHT		6.9 Kg
MATERIALS	- External body	Copper / Brass
	- Inner conductor	Silver plated: copper / brass
	- Insulator	High quality virgin Teflon
EXTERNAL FINISHING		None / Painted black (optional)

Note: F = female

MAX MEAN POWER



STANDARD CONDITIONS:

- V.S.W.R. = 1.0
- Ambient temperature 40°C (104°F)
- Atmospheric Pressure, Dry Air
- Inner Conductor Temperature 120°C (248°F)

