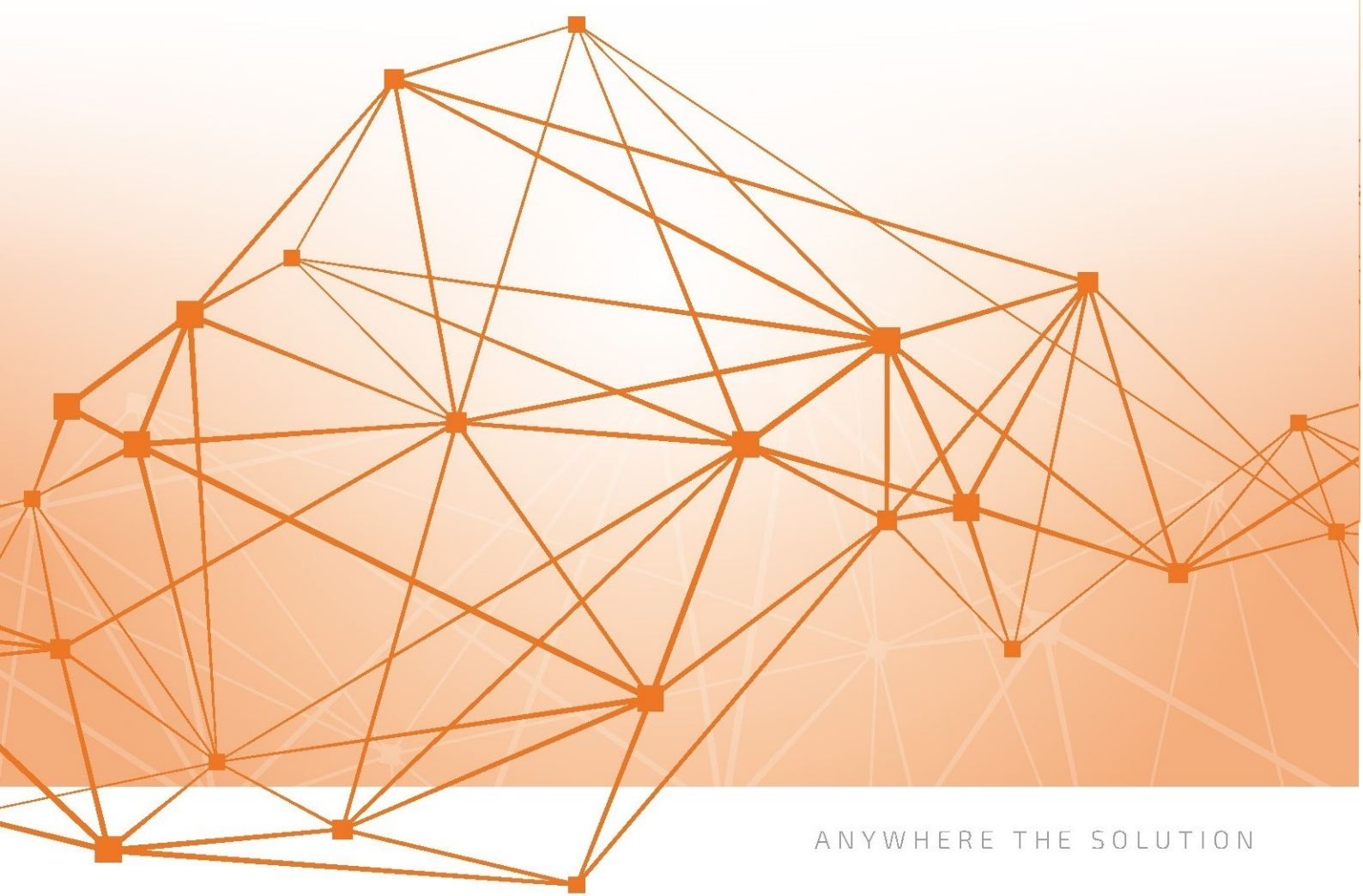




Broadcast Power Meter



ANYWHERE THE SOLUTION



+ MAIN FEATURES

- Permanent monitoring of RF-System chains , Combiner , main Feeder or Antenna
- Real time RL/VSWR and True RMS power measurement
- Frequency range : 40 MHz to 2 GHz
- Trend curves for power and return loss with set thresholds for alarms.
- Display Power and VSWR

General

Dimension box	19" sub-rack – 1HU / H43.7mm x W483 x D220mm
RF interfaces box	SMA F-Connector- 4 ports- (2xFWD + RFL)
Data Interface	2x LAN
Serial port	RS-485
Display	Front panel – 2 lines
Operating Temp	-5 to 45 °C (ETSI EN 300 019-2-3)
Safety	EN60950-1 – EN61326-1



Power Measurement

	External directional coupler available in different size (from Nf to 6-1/8)
	Integrated probes, connection by means of RG cables, SMA male connectors
Type of measurement	True RMS
Return loss	≥ 34 dB up to 1 GHz ≥ 25 dB up to 2 GHz
RF Accuracy	0.5 dB

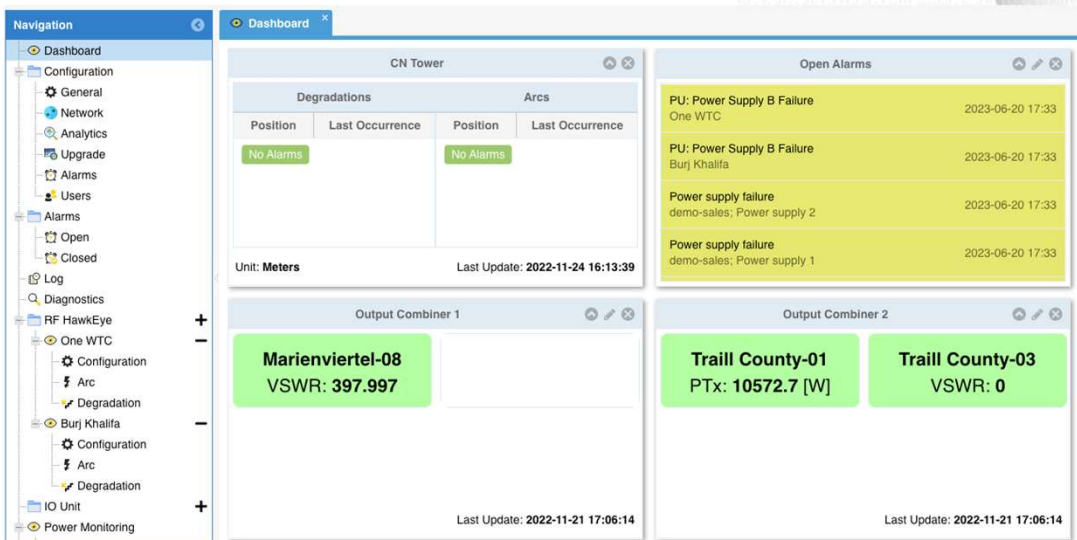
System

Protocols	SNMP v2.0 , SNMP v3.0 Client, Agent TCP/IP web page Http/Https web interface
Power Supply	1 x AC 90 ...264V, 47....63Hz – IEC or -48VDC
Weight	1.5 kg box.

SOFTWARE

The software provides Real-Time Return Loss or VSWR and power value measurements :

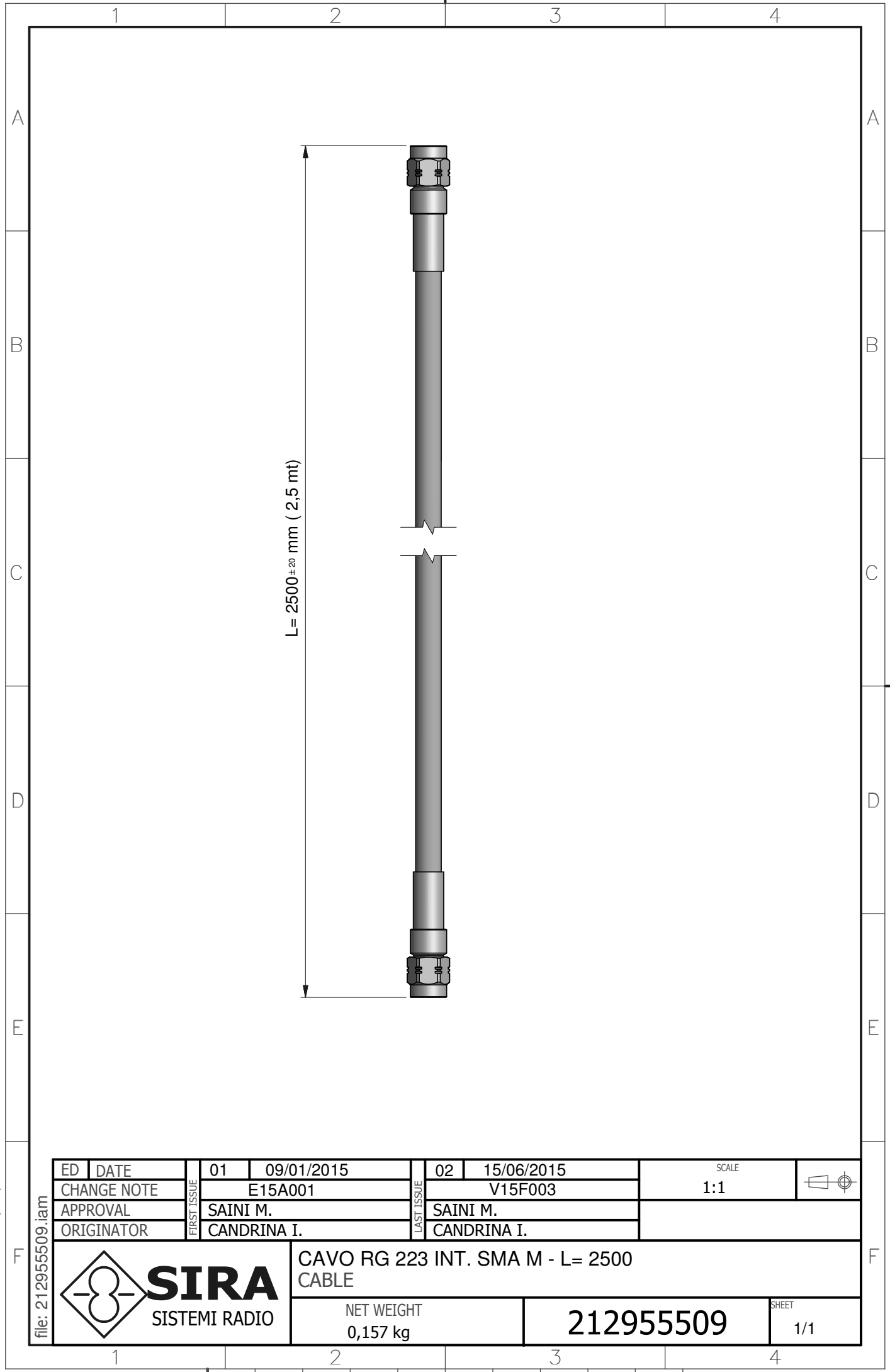
- Web GUI with dashboard
- FWD, REFL and VSWR/RL meters
- Alarms and warnings thresholds configurable along the line
- SNMP interface (alarms, values) available
- TCP/IP – IPv4 – DHCP or Static



Ci riserviamo a termini di legge la proprietà di questo disegno con il divieto di riprodurlo o renderlo comunque noto a ditte concorrenti o a terzi senza la nostra autorizzazione.

According to the law we reserve the right of ownership of this drawing with prohibition to reproduce it or however to notify it to competing business firm of to third parties without authorization.

692.100.004 REV.02 24/01/95 A4
file: 212955509.iam



ED	DATE	01	09/01/2015	02	15/06/2015	SCALE	
CHANGE NOTE		E15A001		V15F003		1:1	
APPROVAL		SAINI M.		SAINI M.			
ORIGINATOR		CANDRINA I.		CANDRINA I.			

	SIRA SISTEMI RADIO	CAVO RG 223 INT. SMA M - L= 2500	
		CABLE	
NET WEIGHT		212955509	SHEET
0,157 kg			1/1

FREQUENCY EQUALIZED DIRECTIONAL COUPLERS

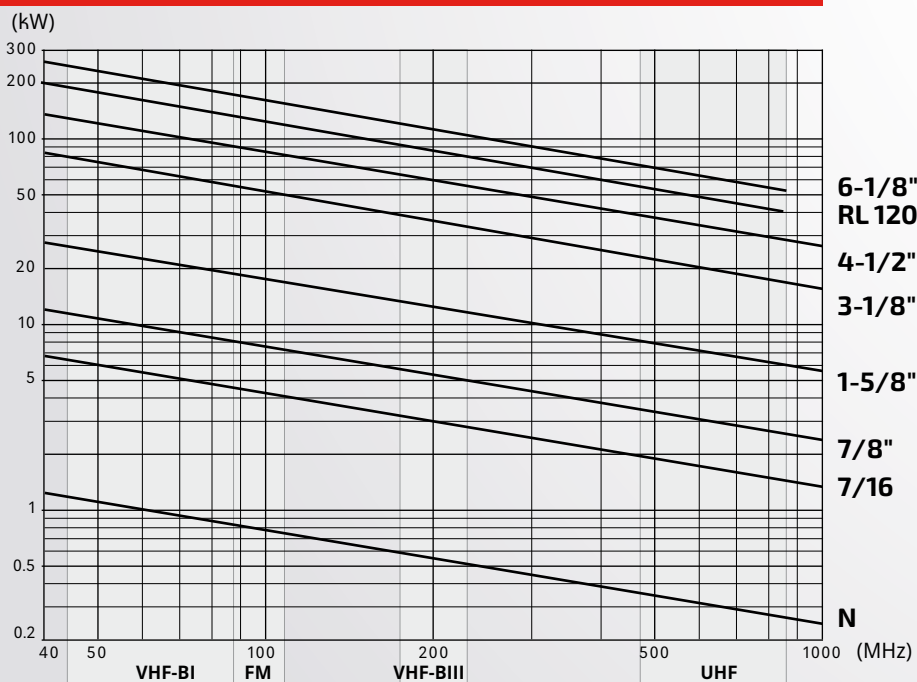
FEATURES

- unflanged type
- low V.S.W.R and insertion losses
- only for indoor applications

GENERAL FEATURES

FREQUENCY RANGE	FM band 87.5 ÷ 108 MHz (EF)
IMPEDANCE	50 ohm
RETURN LOSS	≥ 32 dB
COUPLING FACTOR	See table below
DIRECTIVITY	≥ 30 dB
FLATNESS	≤ ±0.15 dB
MAX MEAN POWER	See table below
OPERATING TEMPERATURE RANGE	-10 to +45° C (+14 to +113° F)
CONNECTORS	See table below
PROBE CONNECTORS	SMA F
WEIGHT	See table below
WATERPROOF	No
MATERIALS	- External body Aluminium, brass - Inner conductor Silver plated brass, silver plated aluminium - Insulator Teflon, rexolite
EXTERNAL FINISHING	Surtec 650

MAX MEAN POWER



STANDARD CONDITIONS:

- V.S.W.R. = 1.0
- Ambient temperature 40°C (104°F)
- Atmospheric Pressure, dry air
- Inner Conductor Temperature 120°C (248°F)

FREQUENCY EQUALIZED DIRECTIONAL COUPLERS

figure "1"

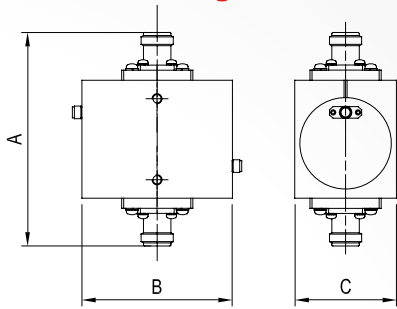


figure "2"

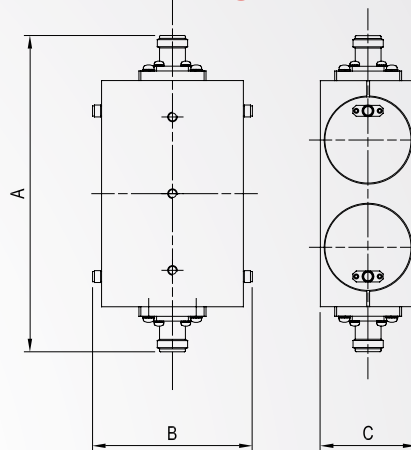


figure "3"

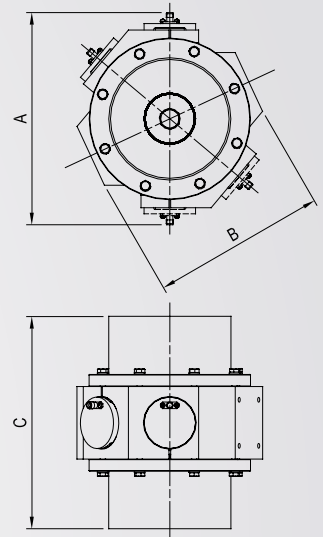
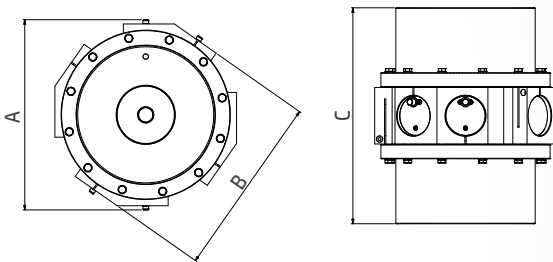


figure "4"



FM BAND

TYPE	CONNECTORS	Nr PROBES	FIGURE	DIMENSIONS mm (in)			WEIGHT Kg (lb) (max)	COUPLING FACTOR (dB) min/max
				A	B	C		
ADR-01/EF/2/AA	NF - NF	2	1	105 (4.1)	104 (4.1)	50 (2)	0.60 (1.3)	-50/-70
ADR-01/EF/2/AA1	NF - NM	2	1	123 (4.8)	104 (4.1)	50 (2)	0.65 (1.4)	-50/-70
ADR-01/EF/2/BB	7/16 F - 7/16 F	2	1	102 (4)	104 (4.1)	50 (2)	0.68 (1.5)	-50/-70
ADR-01/EF/2/BB1	7/16 F - 7/16 M	2	1	111 (4.4)	104 (4.1)	50 (2)	0.72 (1.6)	-50/-70
ADR-01/EF/2/CC/Z	7/8" Unfl F - 7/8" Unfl F	2	1	138 (5.4)	104 (4.1)	50 (2)	0.59 (1.3)	-50/-70
ADR-02/EF/2/DD/Z	1-5/8" Unfl F - 1-5/8" Unfl F	2	1	170 (6.7)	119.5 (4.7)	60 (2.4)	0.93 (2.1)	-55/-75
ADR-03/EF/2/EE/Z	3-1/8" Unfl F - 3-1/8" Unfl F	2	3	155 (6.1)	110 (4.3)	177.4 (7)	2.37 (5.2)	-60/-80
ADR-04/EF/2/FF/Z	4-1/2" Unfl F - 4-1/2" Unfl F	2	3	184 (7.2)	151.5 (6)	184 (7.2)	2.90 (6.4)	-65/-85
ADR-06/EF/2/GG/Z	6-1/8" Unfl F - 6-1/8" Unfl F	2	4	217 (8.5)	203 (8)	241 (9.5)	5.5 (12)	-70/-90

Note: F = female / M = male